

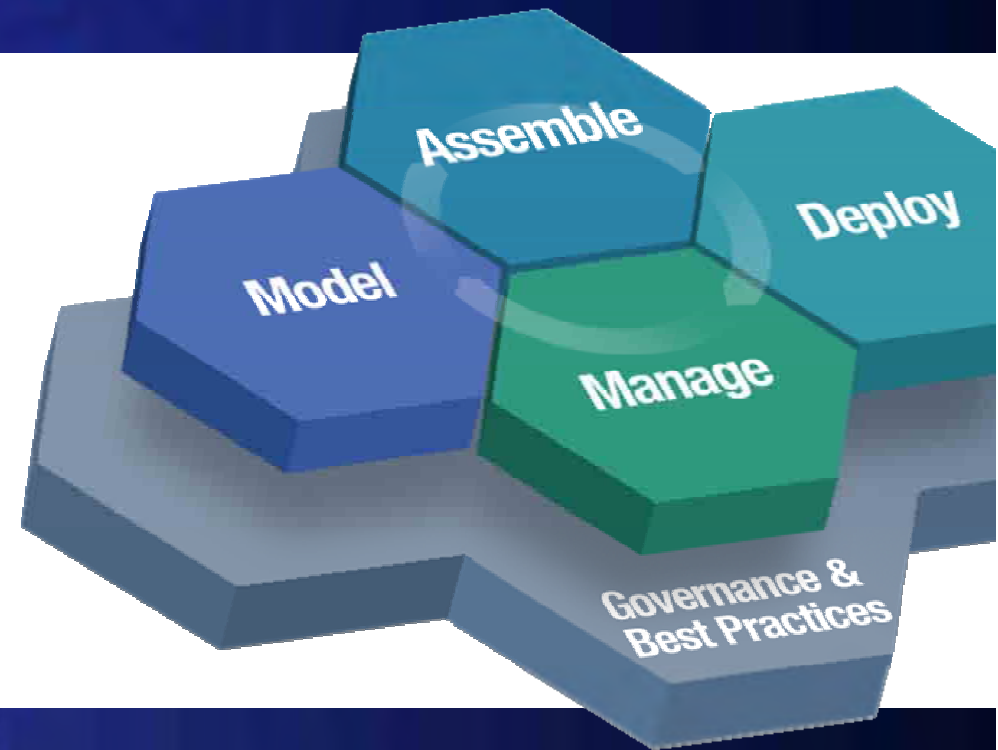


Tivoli Now!

SOA concepts and management in an SOA environment

Session 1.9.

Vinod Ralh
IBM Software Group SOA Architect



ON DEMAND BUSINESS™

4th August 2006

© 2006 IBM Corporation

Agenda

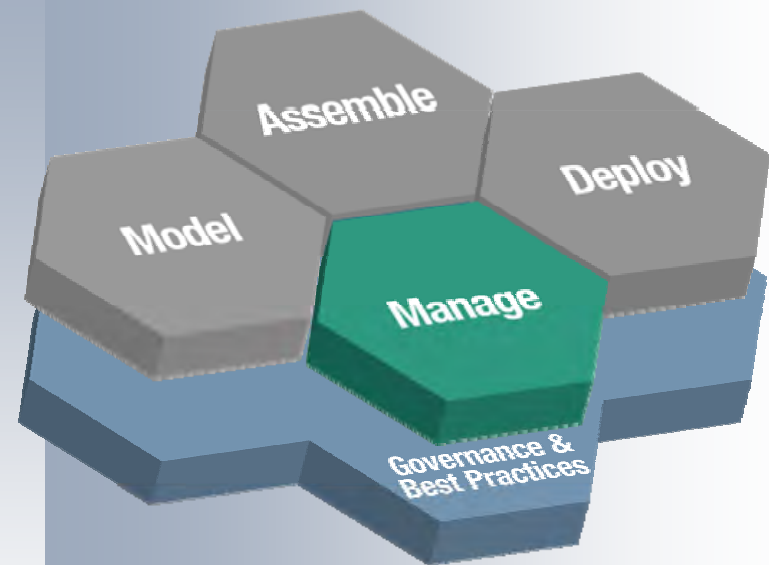
Why SOA?

SOA Concepts

SOA Management

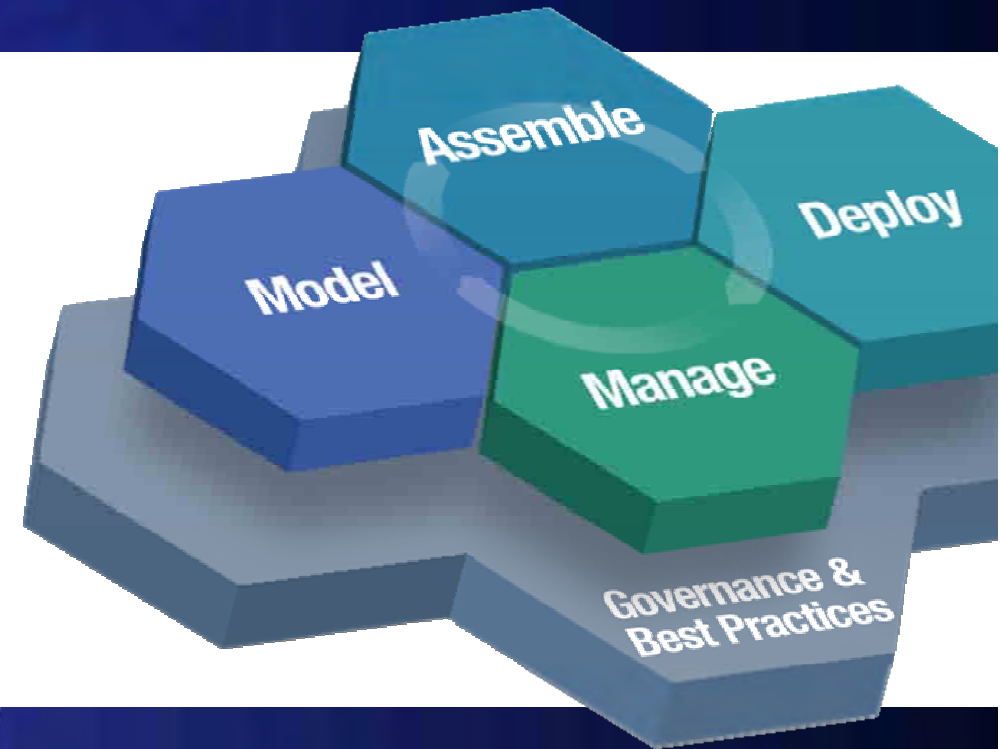
Summary

Q&A





Why SOA?



ON DEMAND BUSINESS™

4th August 2006

© 2006 IBM Corporation

In 1917, Forbes compiled first 100 largest American companies list

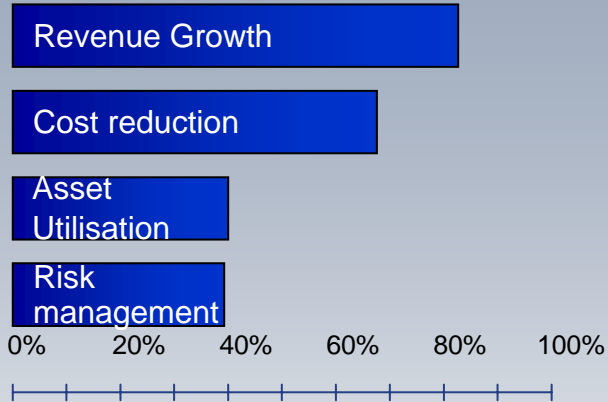
In 1987, Forbes published its 100 list & compared it to its 1917 list

Of the original group, 61 had ceased to exist

Of the remaining 39, only 18 had managed to stay in the top 100.

The Top Focus of Business : Strategic Flexibility Through Innovation

CEOs say they must achieve...

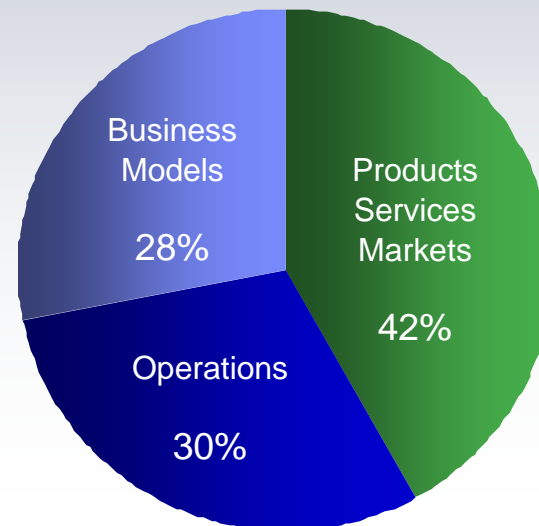


- 65% of the world's top corporate CEOs declared that due to pressures from competitive and market forces, they plan to radically change their companies in the next two years.
- More than 80% of CEOs stated that their organizations have not been very successful at managing change in the past
- 54% stated strategic flexibility was a top benefit of business model innovation.

...and they want to innovate their...



Source: IBM Global CEO Survey, March 2006



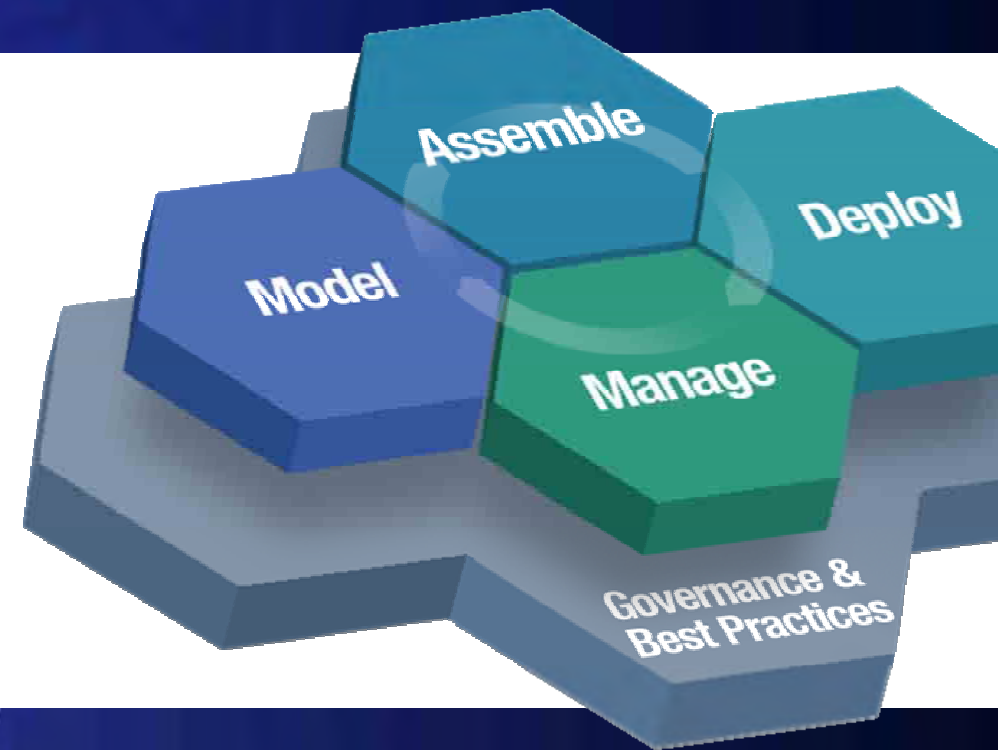
Current State of IT Management

More than 70% of
IT budgets are
currently devoted to
the maintenance
and operations of
existing applications
and systems.

*The Yankee Group,
3/05*



SOA Concepts



ON DEMAND BUSINESS™

4th August 2006

© 2006 IBM Corporation

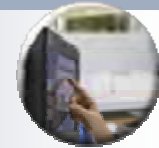
Service Oriented Architecture

Different Things to Different People

A *model of the business* and related key performance indicators

Roles

Business



An *architectural style* which requires a service provider, requestor and a service description. It addresses characteristics such as loose coupling, reuse and simple and composite implementations.

Architecture



A *programming model* complete with standards, tools, methods and technologies such as Web services

Implementation



A *set of agreements and contracts* among service requestors and service providers that specify the quality of service.

Operations



What is?

... a service?

A **repeatable business task** – e.g.,
check customer credit;
open new account

... service orientation?

A way of integrating your
business as linked services
and the outcomes that
they bring

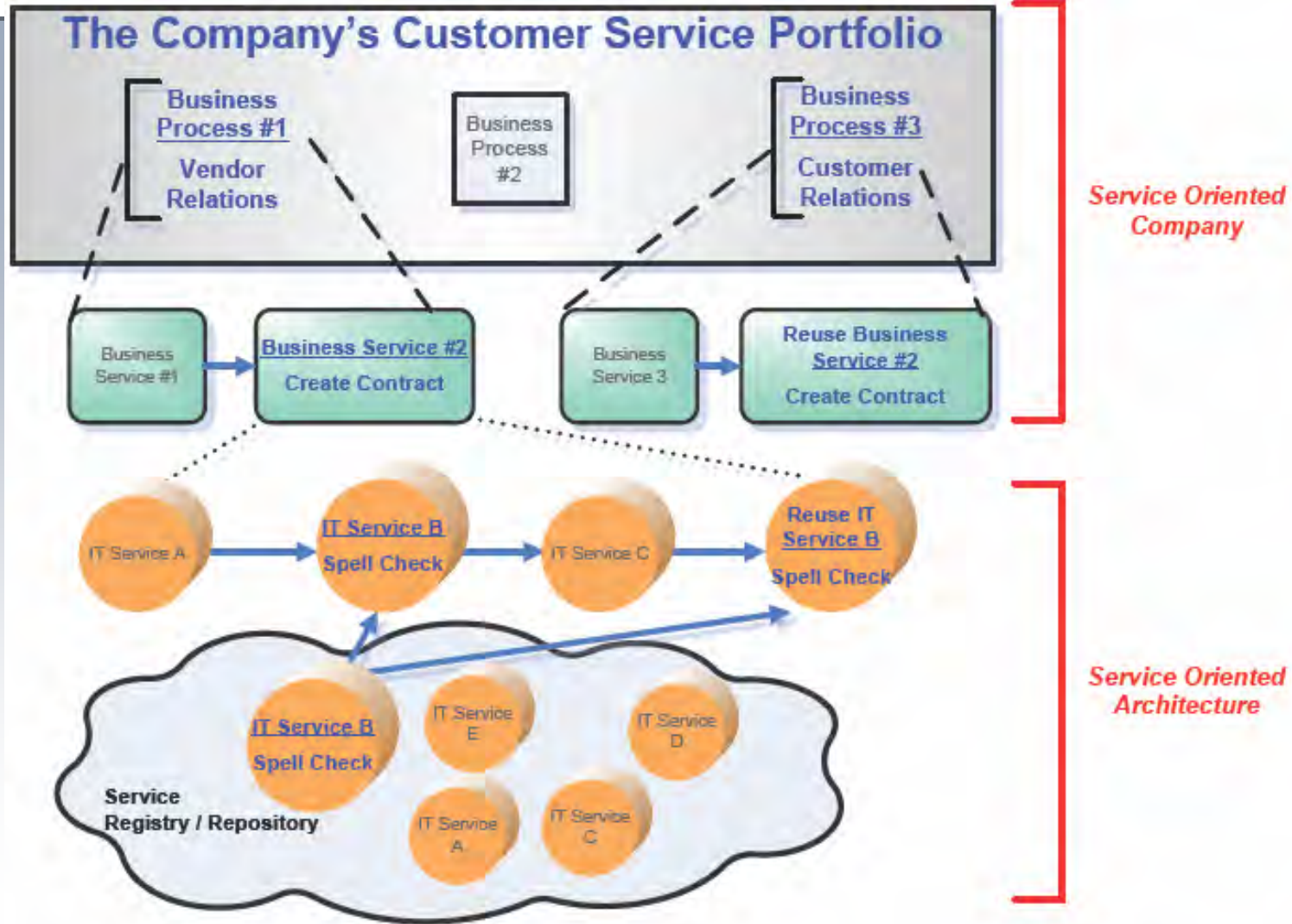
... service oriented architecture (SOA)?

An IT **architectural style** that supports
service orientation

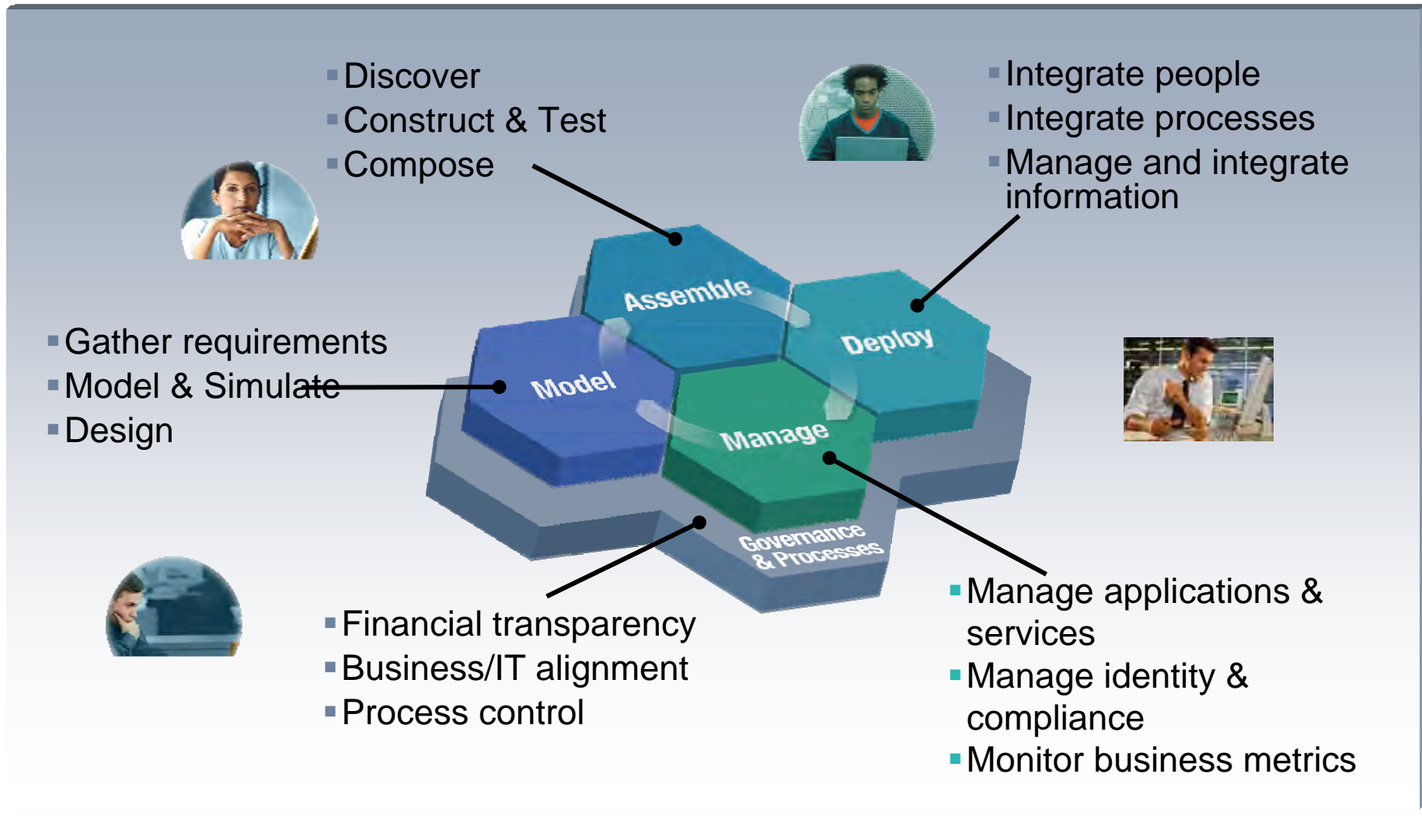
... a composite application?

A set of **related & integrated** services that
support a business
process built on an SOA

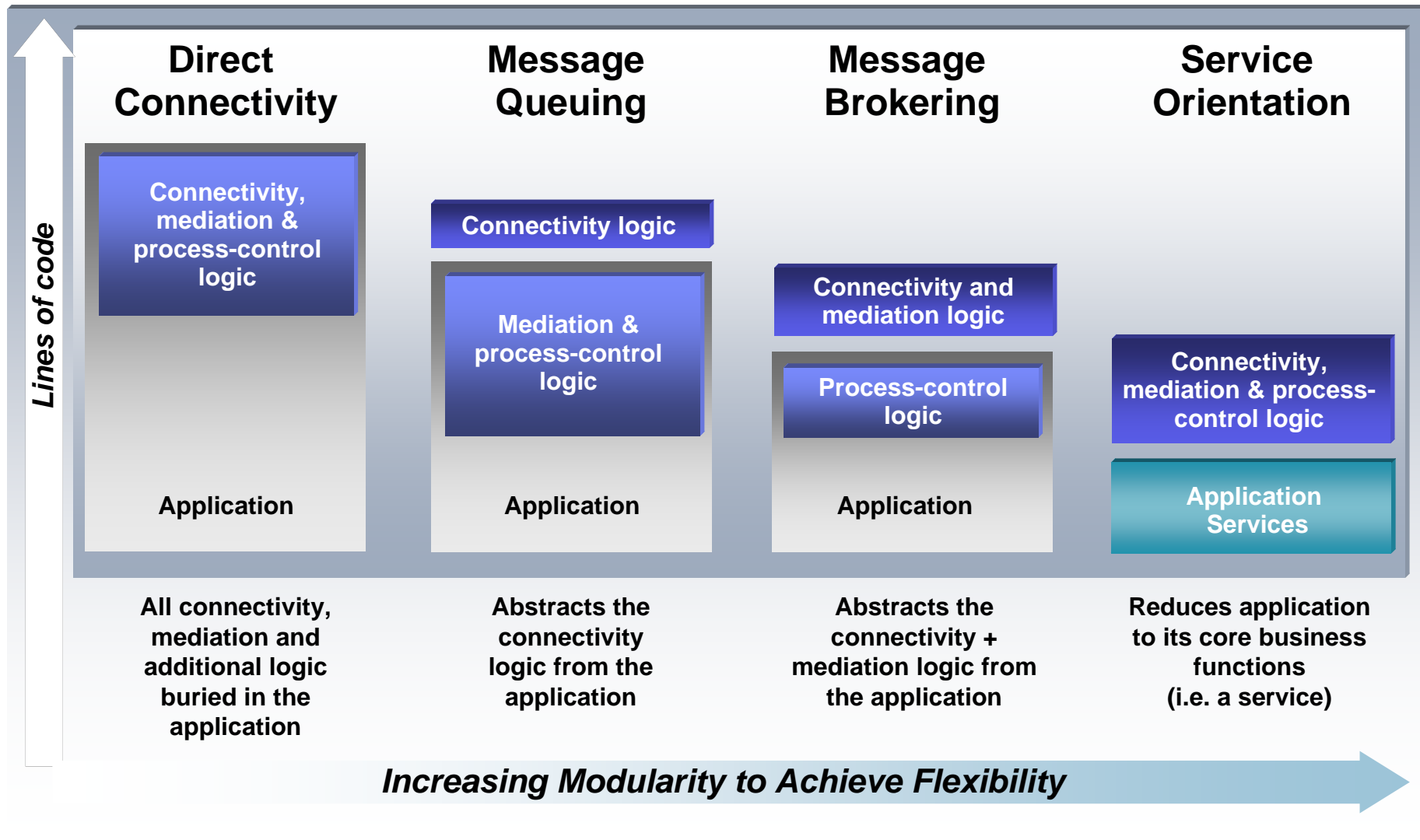
A Service Oriented business requires a SOA Foundation



The SOA Lifecycle



SOA: The Next Step on the Connectivity Evolution

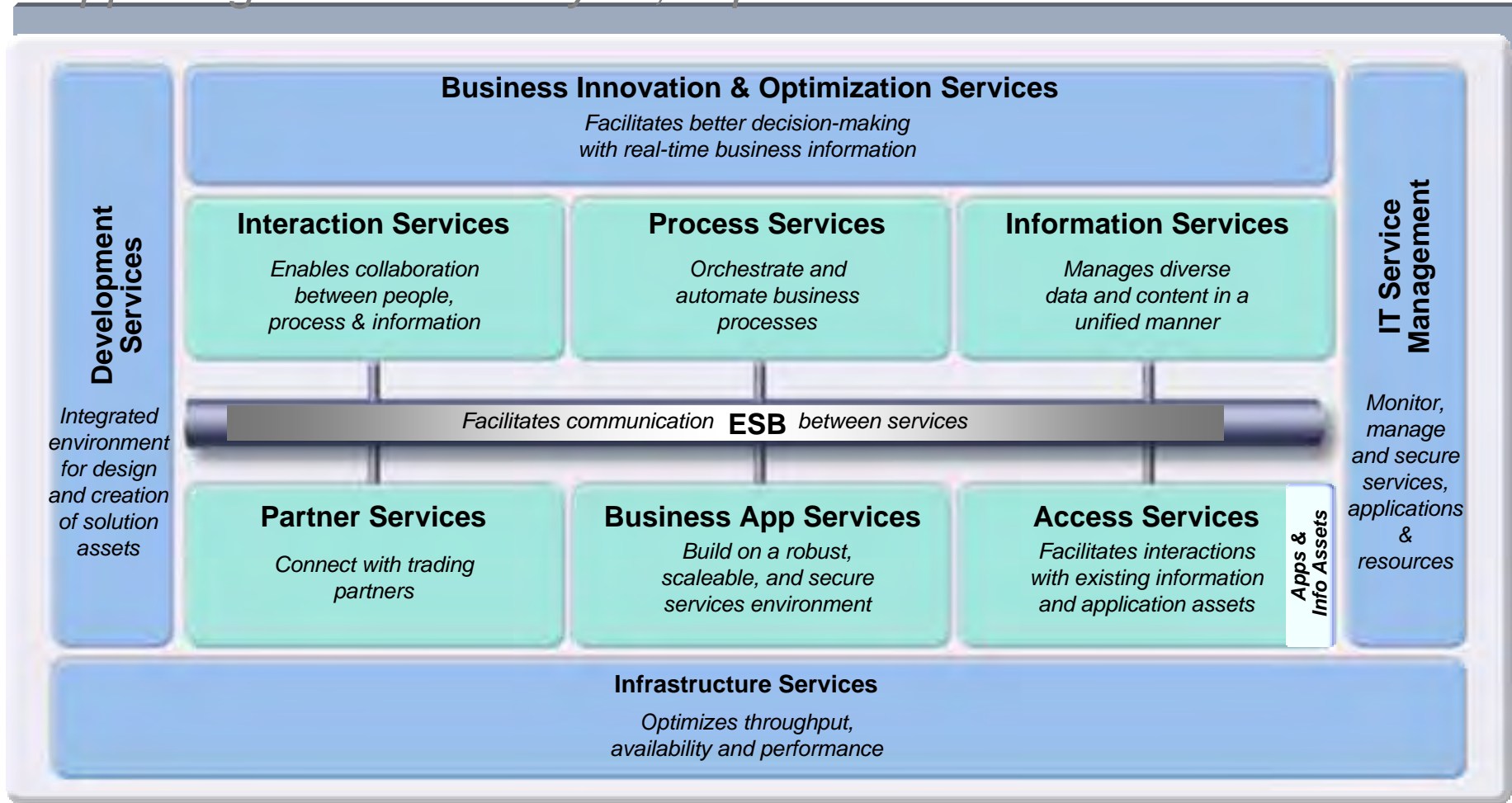


SOA: The Focus of the Enterprise Architect

Deliverable	Description	Overview
<p>SOA Reference Architecture</p>	<p>The SOA Reference Architecture defines a reference framework and corresponding IT principles for SOA implementation projects</p>	
<p>SOA Roadmap</p>	<p>The Roadmap is used to create a tailored transition plan for moving toward the SOA Reference Architecture</p>	
<p>SOA Governance Model</p>	<p>The SOA Governance Model defines the decision rights along with the associated measurements and controls</p>	

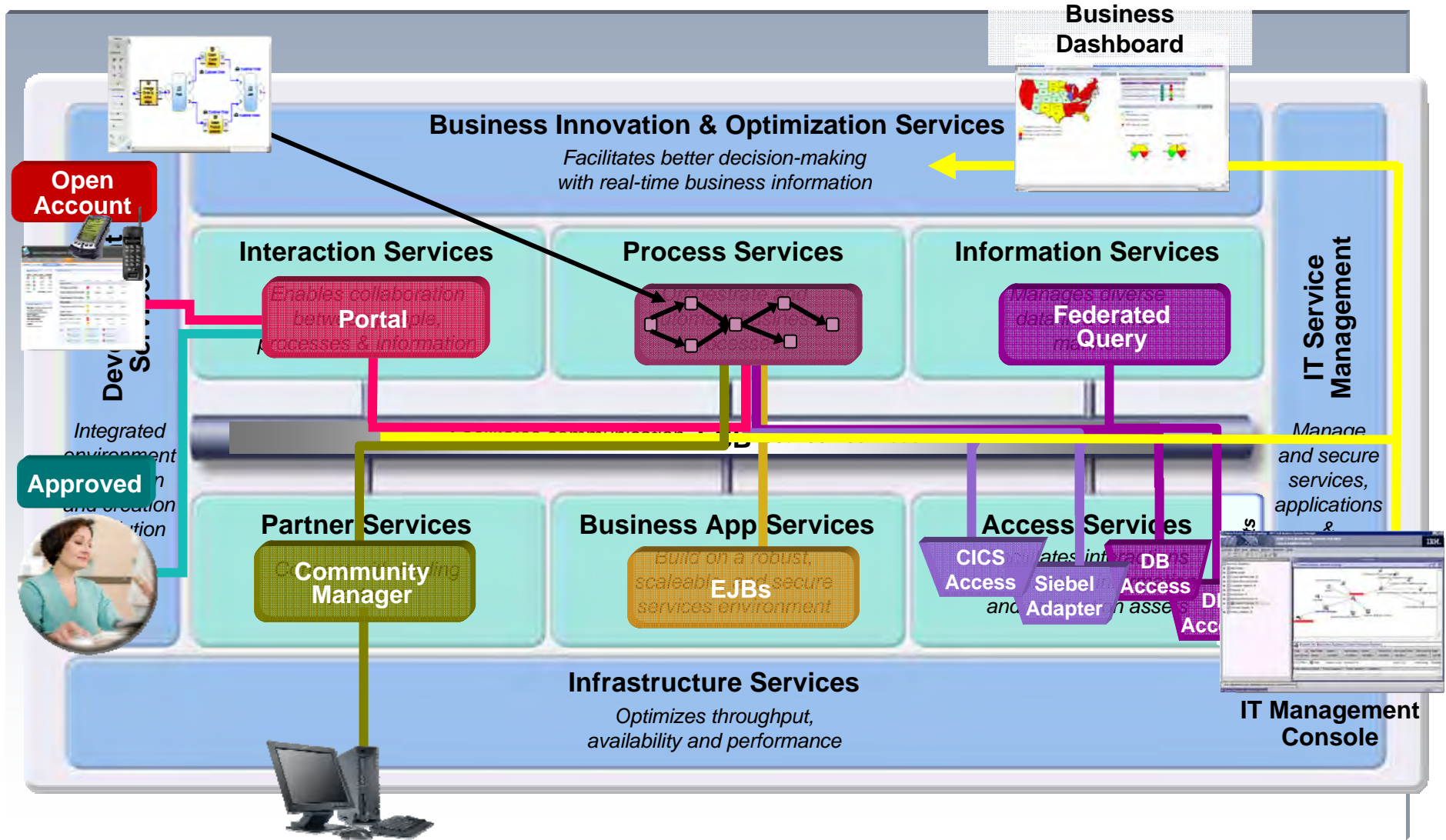
SOA Reference Architecture

Supporting the SOA Lifecycle, separation of concerns



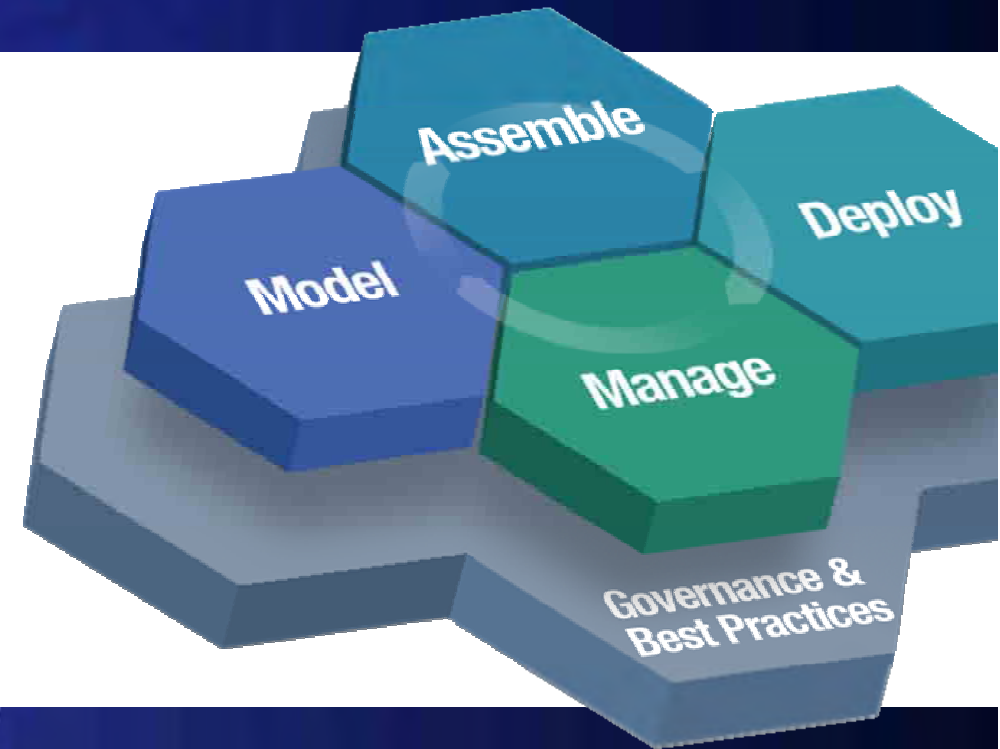
Separation of Concerns

The SOA Reference Architecture in Action





SOA management

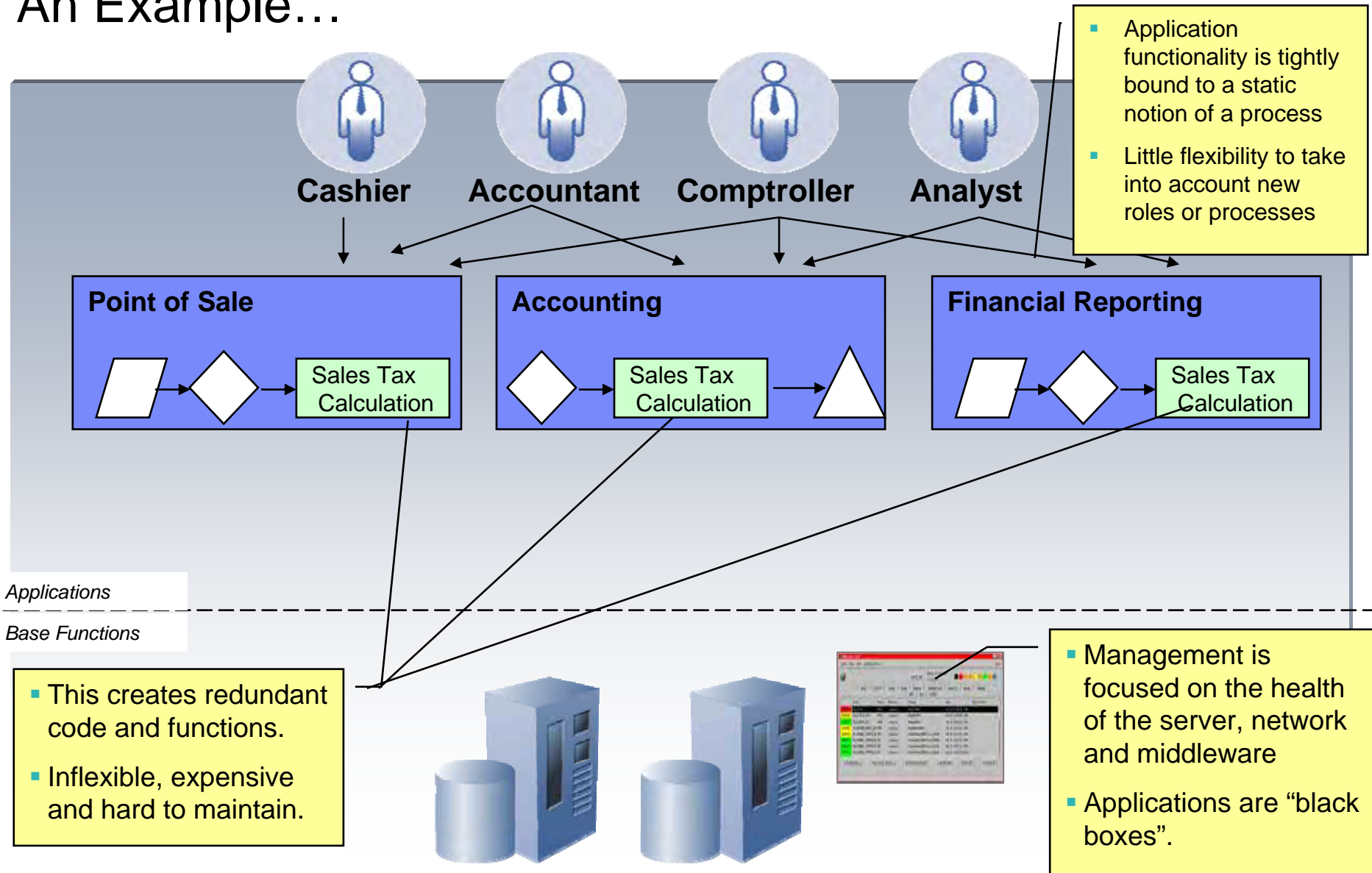


ON DEMAND BUSINESS™

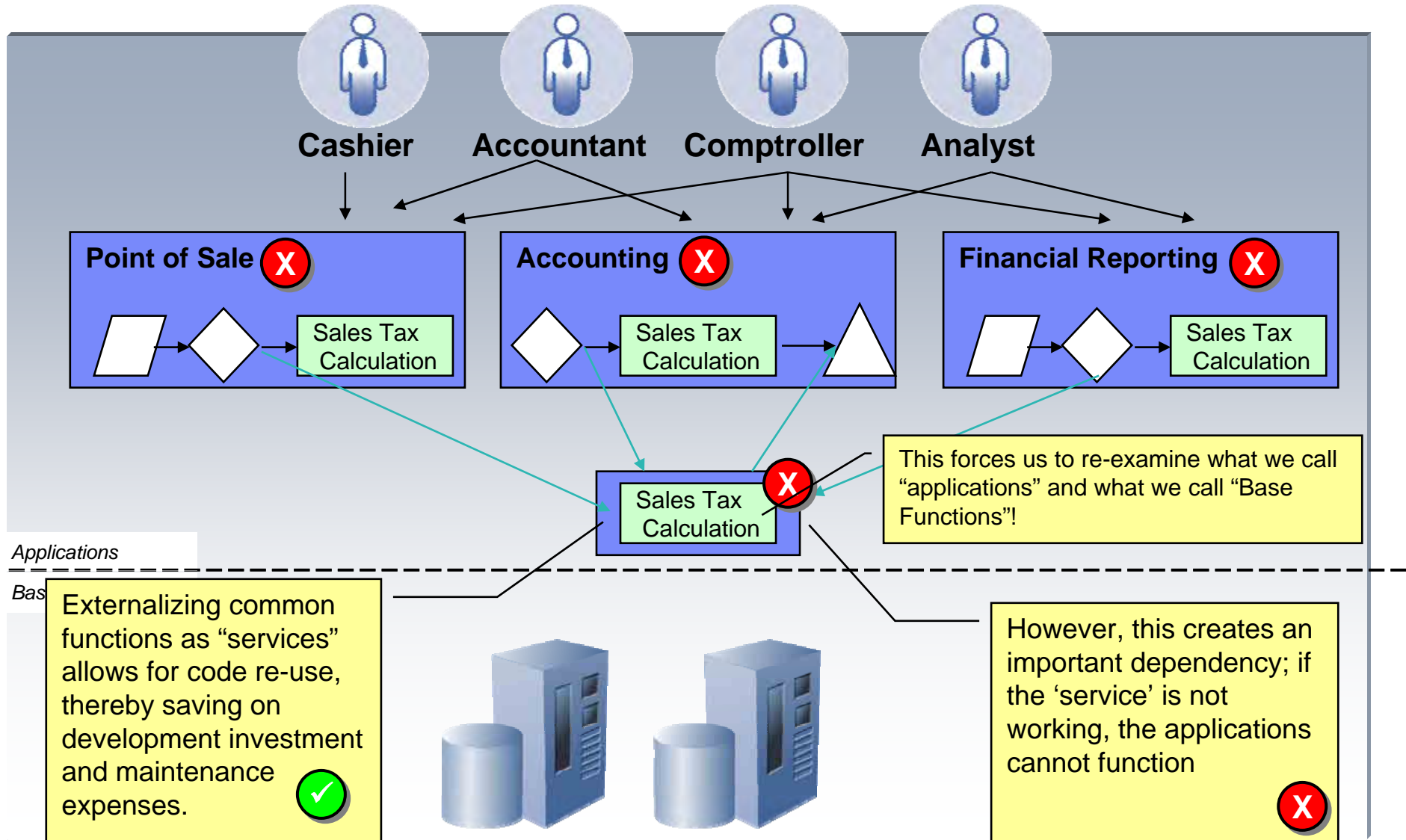
4th August 2006

© 2006 IBM Corporation

An Example...

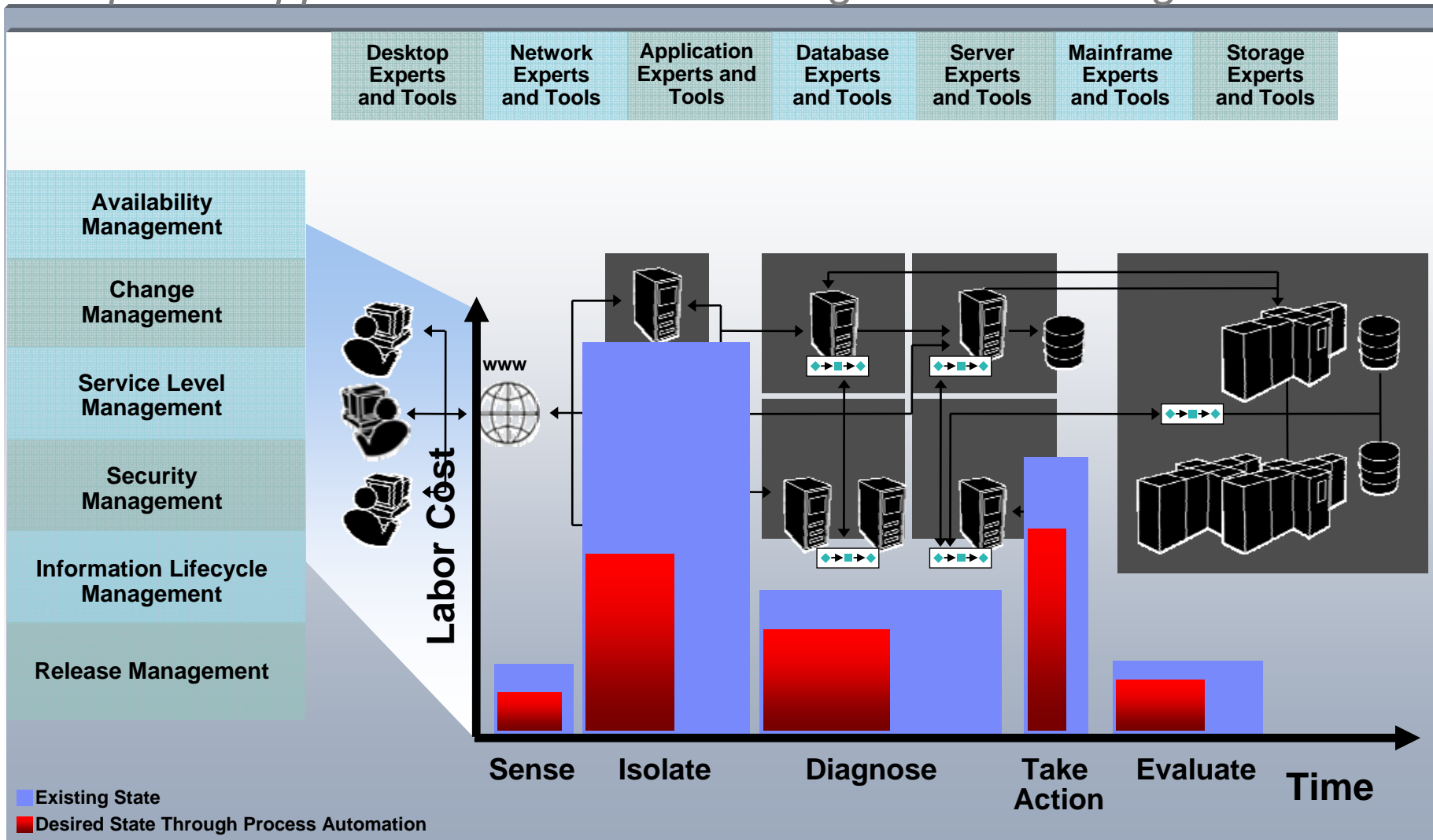


The New World: Composable Services



Managing Cost and Responsiveness Across IT Silos

Composite Applications Introduce Management Challenges



IBM IT Service Management

Built on the SOA Foundation

