

IBM Cognos TM1 – Introduction to FPM

Simon Dowle



DATA MANAGEMENT

*DATA SERVERS, DATA WAREHOUSE
AND DATA ARCHIVING (PRINCETON)*



ENTERPRISE CONTENT MANAGEMENT

INCLUDING FILENET PRODUCT PORTFOLIO



INFORMATION INTEGRATION & MASTER DATA MANAGEMENT

*PREVIOUSLY KNOWN AS ASCENTIAL,
DWL, SRD & TRIGO.*



BUSINESS INTELLIGENCE & PERFORMANCE MANAGEMENT

COGNOS



- **An OLAP server Platform:**

- Designed for **writeback** allowing for “speed of thought” Planning and Budgeting
- **Real-Time response** in a changing environment
- **What-if** scenario modeling
- Patented, **64 bit, in-memory** multidimensional server
- Best in class **Excel integration** leveraging familiar Microsoft Excel environment
- Best in class, self-service **analytic reporting**
- **Centrally managed** business hierarchies, rules, calculations



Feature

Benefit

64-bit

Model and analyze large data volumes with fast response times

In-Memory

Easily create simulations interactively to test new business assumptions

Multi-Cube

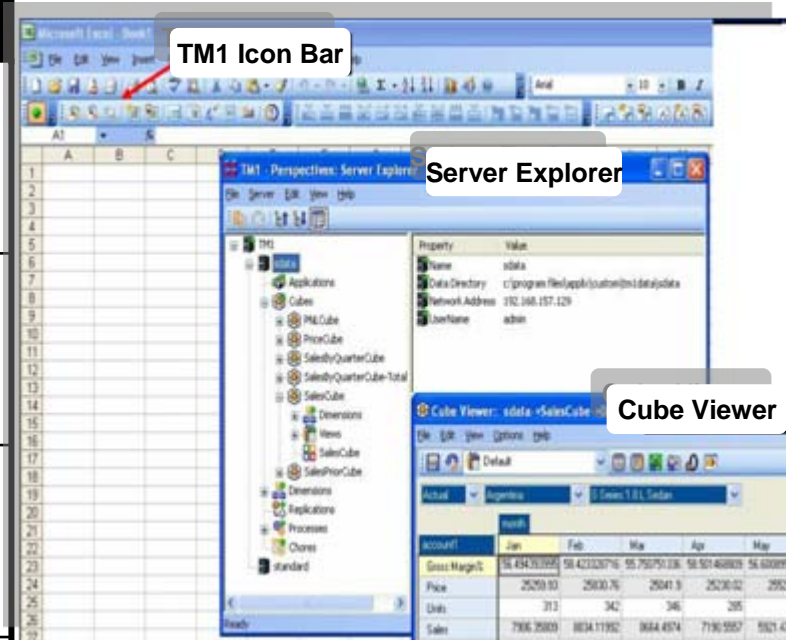
Model any type of business process; natural way to build models

Rules Language

Create complex financial applications

Turbo Integrator

Easily load large amounts of data quickly (e.g., intraday) from any sources including ERP, DW, etc.



Feature

Benefit

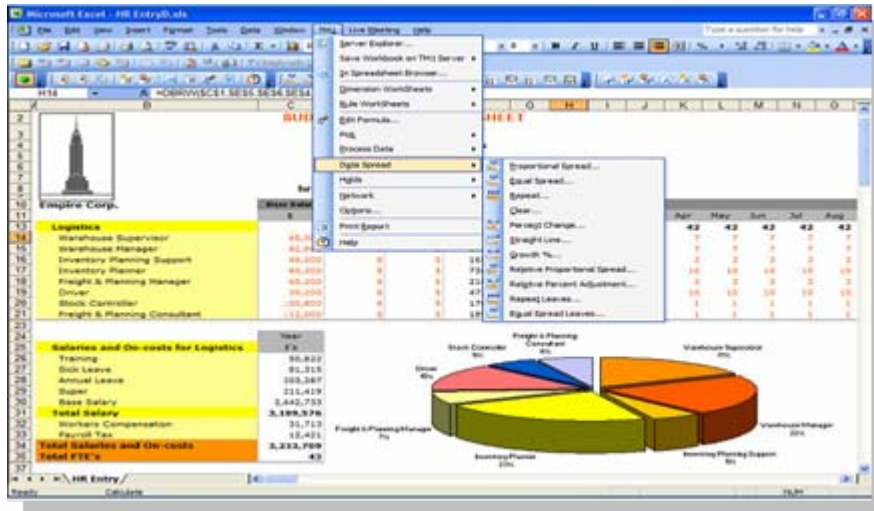
TM1 Server Explorer

Build, deploy, and maintain application dimensions, cubes, rules, security, etc.

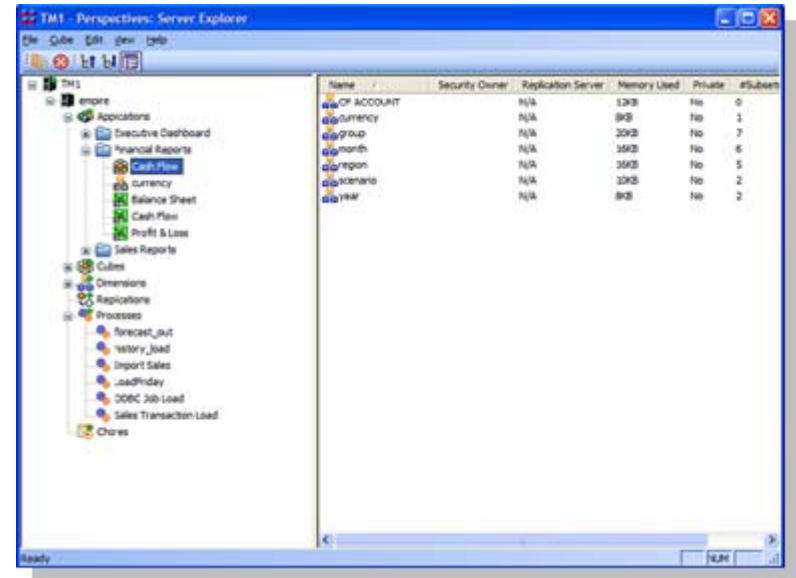
Cognos TM1 Excel

Easily create reports and templates deployed via Excel or web

Cognos TM1 Excel



Cognos TM1 Server Explorer



Feature

Cognos TM1 Web

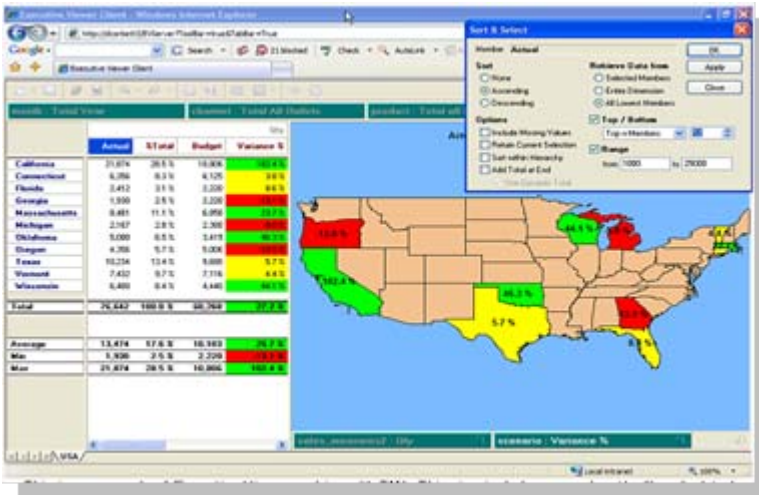
Cognos TM1
Executive Viewer

Benefit

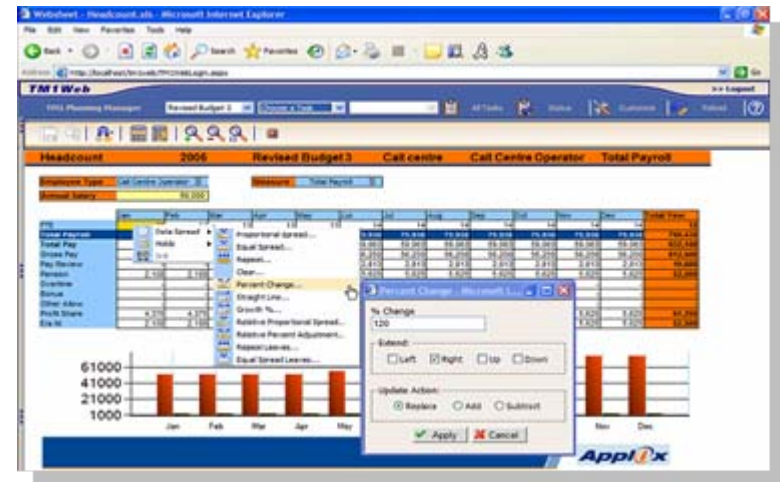
Simply access Excel “generated” reports or input templates

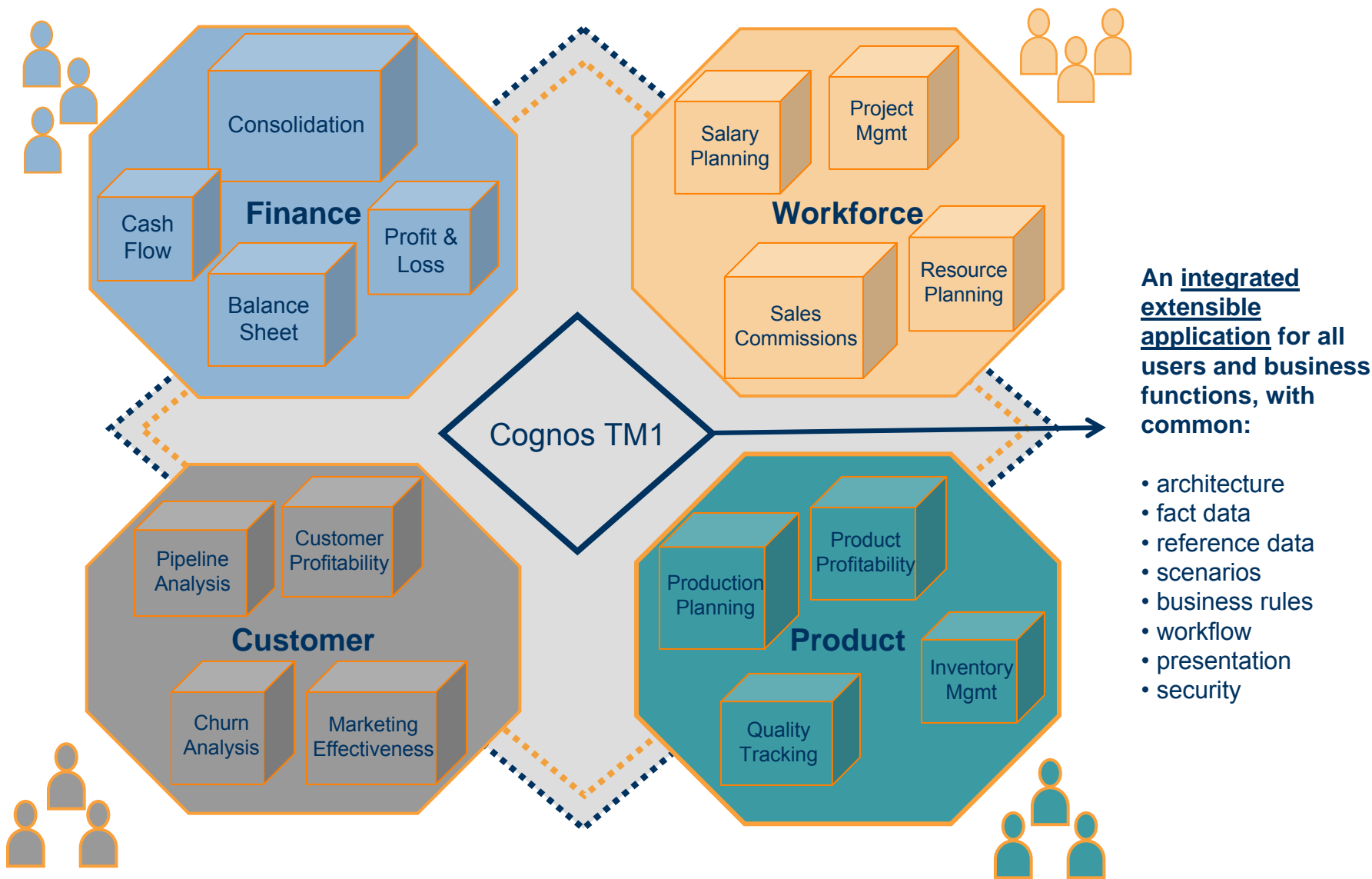
Self-service ad-hoc analysis optimized for R/W access to TM1
(also supports Essbase, MSAS)

Cognos TM1 Executive Viewer



Cognos TM1 Web





Introduction Demo

