

Agenda

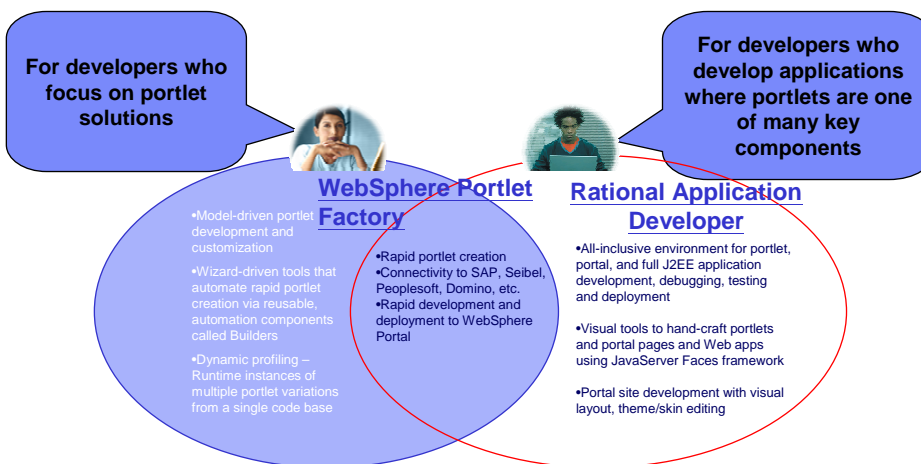
- Product Capabilities and Overview
 - Rational Application Developer
 - WebSphere Portlet Factory

- Choosing which tool to use for portal and portlet development

- Q & A



Optimizing Development of Composite Applications



Choosing the Right Toolset


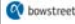
- RAD is the best tool for many portal development tasks including creating pages, themes & skins
 - ▶ All WPF portlets can be included in portals pages created with RAD
- RAD also includes a complete Portal Test Environment
 - ▶ All WPF portlets can be easily tested in this environment

Choosing the Right Toolset

Determine which portlet creation tools to use based on the requirements of the project, and developer preferences

Criteria	Tool Choice
Developer Preference	<ul style="list-style-type: none"> ▪ RAD is for developers that need complete access and control of all portlet, portal and other application code. ▪ WPF enables development of portlet applications quickly with wizard-driven tools that automate portlet creation ▪ If a developer is familiar with a particular tool or programming model then it may make sense to leverage that knowledge in future efforts.

RAD and WPF: Unique Values and Project Considerations

	Rational Application Developer V6.0 	WebSphere Portlet Factory 
Unique Values	<ul style="list-style-type: none"> ●Support end-to-end portal application development – creating, testing, debugging and deployment. ●Portal site development with visual layout, theme/skin editing ●Complete Java development environment and user-interface design tools for developing enterprise applications 	<ul style="list-style-type: none"> ●Build, change, and customize applications rapidly by assembling ready-to-use software components called Builders. ●Does not require Java, J2EE and portlet API knowledge unless custom Builders are required. ●Easy to build multiple portlet variations from one code base by using Profiling capability.
Project Considerations	<ul style="list-style-type: none"> ●Solution requires highly customized portal applications that will be built by J2EE or portlet professionals. ●Developers need complete and precise control of all portlet and portal application code. 	<ul style="list-style-type: none"> ●Customer needs to develop portlet applications quickly without J2EE or portlet professionals. ●Customer has requirements for variability (i.e., customized portlets that adapt based on user dimensions, such as role, geography, or brand.)

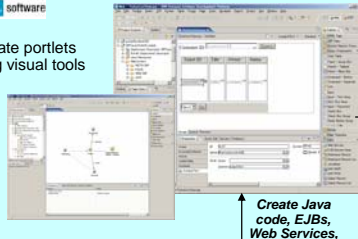
RAD and WPF: Complementary Scenario

1. Install RAD 6.0 with Portal Test Environment for WebSphere Portal V5.0.2.2 or V5.1.
2. Install WPF into RAD.
3. Build portlets with WPF and/or RAD.
4. Incorporate the portlets created by either WPF or RAD into a portal site created in RAD:
 - i. Create portal site, portal pages and lay out portlets onto pages using Portal Designer.
 - ii. Add functions using Java, XML, Web Service, EJB, JSF, and Struts tools.
 - iii. Customize portal themes and skins using Page Designer and CSS Designer.
 - iv. Test and debug portlets and portal pages using a local portal test environment.
5. Use RAD Export/Deploy wizard to deploy a portal site or use WPF ant scripts to deploy portlets generated by WPF.

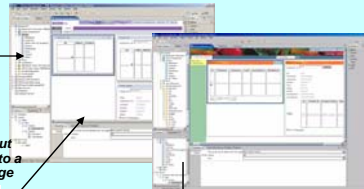
RAD and WPF: Complementary Scenario (cont.)

Rational Application Developer

- Create portlets using visual tools

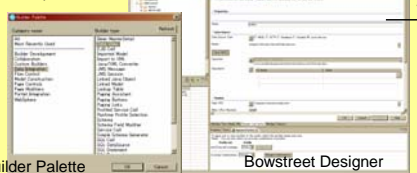


- Creates portal pages, assembling portlets
- Customize portal themes and skins



WebSphere Portlet Factory

- Create and customize models using Builders
- Generate portlets



Laying out portlets into a portal page

Test & Debug portlets and portal page

Test & Debug portlets

- Test and Debug in a local Portal Test Environment

Builder Palette

Bowstreet Designer

24

Portlet Factory and Rational Application Developer Summary

WebSphere Portlet Factory

- ▶ Portlet development environment that simplifies and speeds up the design and development process
- ▶ Pre-defined, reusable templates and patterns
- ▶ Connectivity to common back-end systems like Lotus Domino, Siebel, SAP, Peoplesoft, JD Edwards
- ▶ Role based, dynamic portlet design

Rational Application Developer

- ▶ Complete development environment for design, build, test and deployment
- ▶ Supports all types of development, including both portal and portlet development
- ▶ Allows developers to use the same tool for all their development needs
- ▶ Provides visual WYSIWYG design capabilities
- ▶ Connectivity to common back end systems like Lotus Domino, SAP, Siebel, Peoplesoft, CICS, IMS

25